



fieldfisher

Insight into ESG

How to lift the lid on corporate support

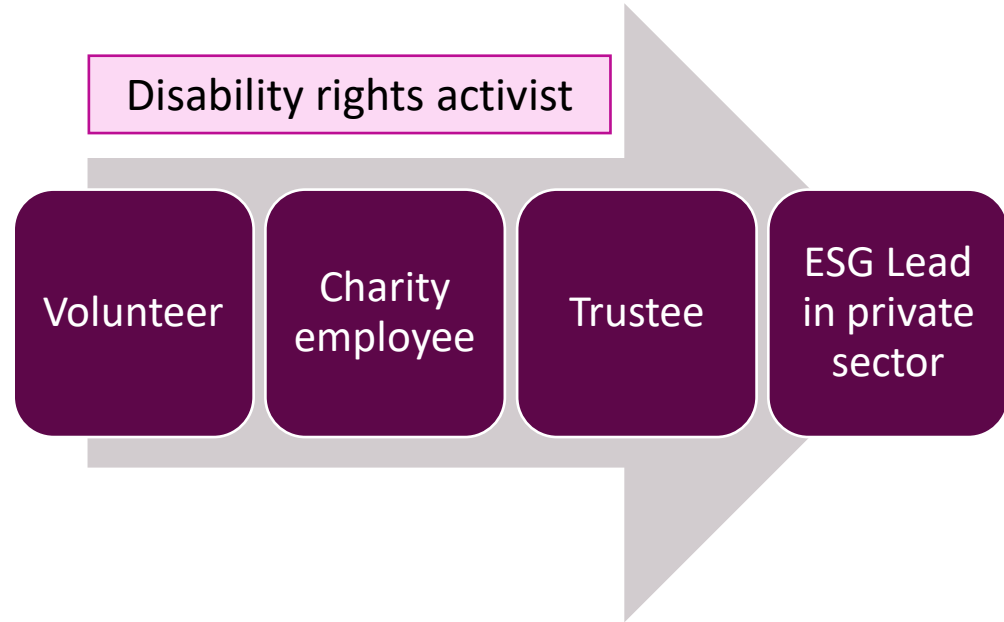
November 2023

Setting the scene



Millie Hawes

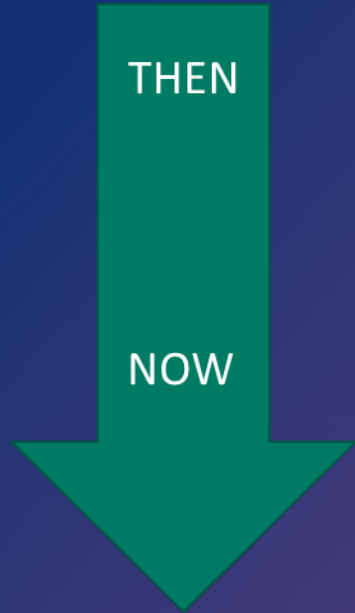
Head of Just Purpose, Fieldfisher LLP



How would you define CSR?

Do you get any corporate support at the moment?

What actually is corporate responsibility?



Corporate Social Responsibility / Responsible Business (voluntary)

- the idea that a company should be interested in and willing to help society and the environment as well as be concerned about the products/services and profits it makes

Environment, Social, Governance (mandatory for many corporate entities)

- a framework designed to be embedded into an organisation's strategy that considers the needs and ways in which to generate value for all organisational stakeholders (such as employees, customers, suppliers and investors)

ESG



ESG Drivers



Insight into Just Purpose

Reimagining corporate responsibility

A pair of hands is shown from the bottom, cupping a glowing, fiery Earth globe. The globe is the central focus, with bright orange and yellow light emanating from its surface, set against a dark, starry background. The hands are positioned symmetrically, with fingers slightly curled around the base of the globe. The overall mood is one of care and responsibility.

JUST PURPOSE

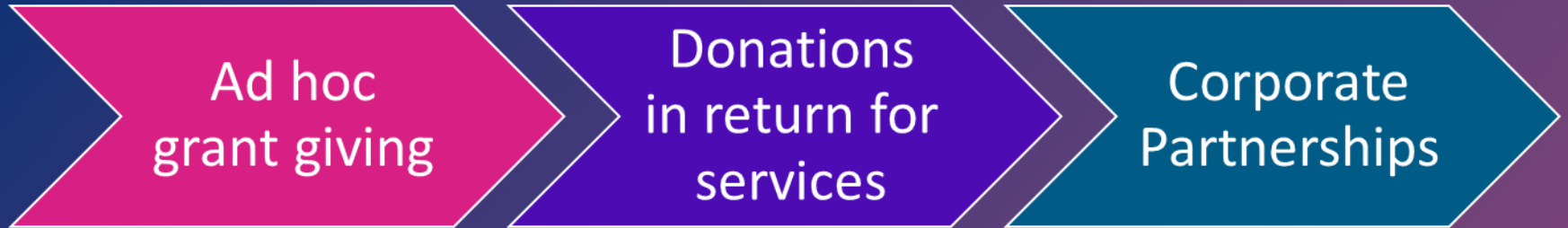
“Find purpose. The means will follow.” – Mahatma Gandhi



fieldfisher

Community

Types of Financial Support



What does corporate funding look like?

Unrestricted funding

Individual / office-wide fundraising

Foundation / firm grants

In-kind support
(events space,
supplies etc)

Matched
funding

Awareness
raising

Connections

Gift Aid and
corporate
equivalent

Is it just about financial transactions?

What else could you get from a corporate?



fieldfisher

Pro bono

Pro bono | Strengthening organisations

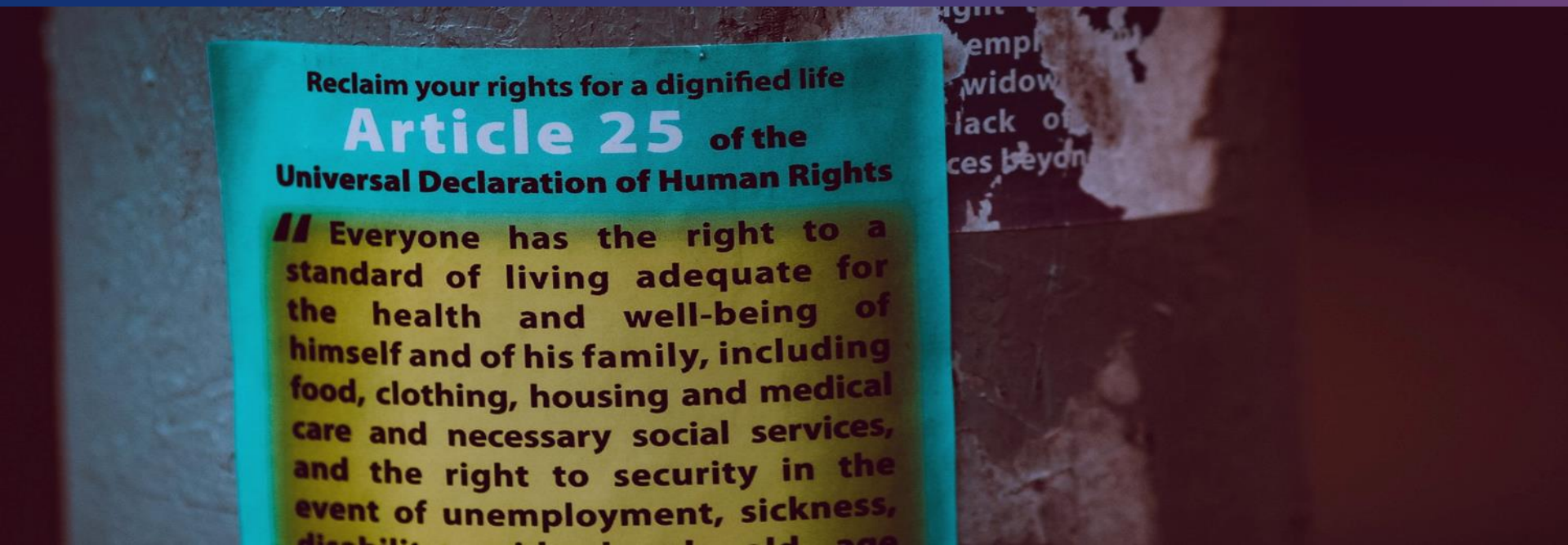


Insight into Just Purpose

Pro bono in focus | Disability rights



Legal education | Empowering people to realise their rights



Reclaim your rights for a dignified life

Article 25 of the
Universal Declaration of Human Rights

Everyone has the right to a standard of living adequate for the health and well-being of himself and of his family, including food, clothing, housing and medical care and necessary social services, and the right to security in the event of unemployment, sickness, disability, old age, and widowhood.



fieldfisher

Sustainability

ESG Reporting and Social Audit

Fieldfisher
ESG Report
2022

fieldfisher



Environment



Social



Governance

Building a European Legal Powerhouse | [fieldfisher.com](https://www.fieldfisher.com)

ESG

Fieldfisher ESG Report 2022

Contents

3 About us

4 A message from our
Managing Partner
Robert Shooter

6 ESG highlights

- 6 Environmental
- 7 Social: Community
- 7 Social: Pro Bono
- 8 ESG leaders and champions across the Fieldfisher network
- 9 **Interview:** Philipp Plog, Managing Partner, Germany

10 Environment

- 10 Our carbon footprint
- 11 Acting on our carbon 'Pawprint'
- 12 Rooting for Change
- 13 Net Zero Pathway: the carbon reporting and reduction journey
- 14 Reducing our impact with Cool Effect
- 15 Sustainability highlights
- 16 **Interview:** Rachael Wild, Knowledge and Information Officer and Chair of Sustainability Programme, London
- 17 **Interview:** JP McDowell, Managing Partner, Ireland



18 Social: Our people

- 18 Inclusiveness and Diversity networks
- 19 Ethnic, gender & social diversity
- 20 Disability inclusion
- 22 I&D activities in 2022
- 23 Supporting our people

24 Social: Community

- 24 Community statistics
- 25 Charity partners
- 26 Charity highlights
- 27 **Case study:** Supporting the evacuation and resettlement of Afghan people
- 28 **Case study:** Supporting Ukrainian refugees
- 29 **Case study:** Empowering young people in Belgium
- 30 **Interview:** Jessica Gardner, Partner, Competition and Regulatory, London



31 Social: Pro bono

- 32 Sustainability – environmental pro bono
- 33 **Case studies:** Securing young people's future with KIND UK
- 34 **Case study:** Tackling avoidable deaths in the learning disabled community
- 35 **Interview:** Mark Webber, Managing Partner, US

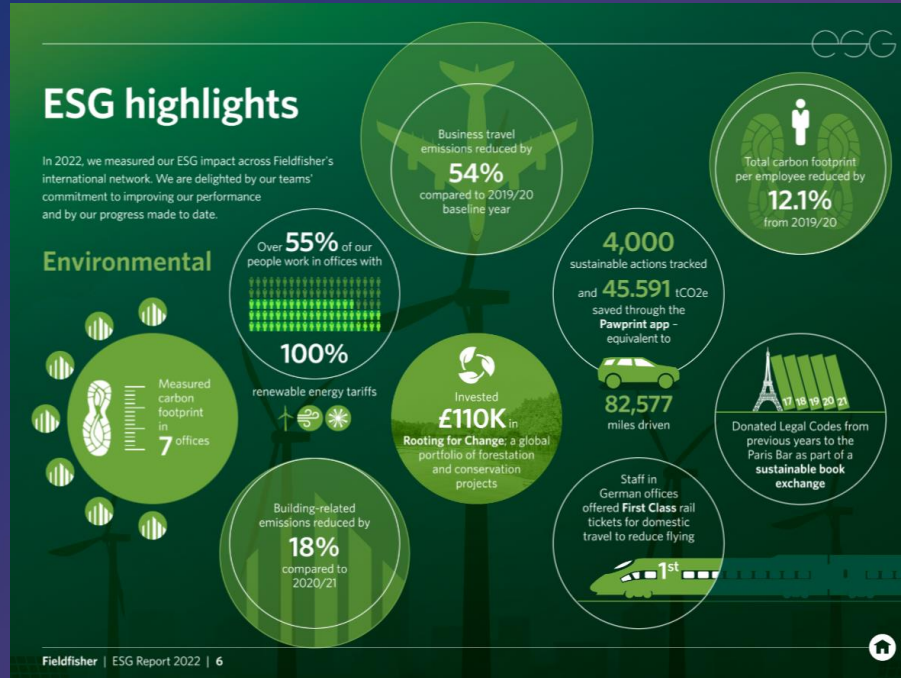
36 Governance

- 36 Executive Committee
- 37 Supervisory Board and Operations Board
- 38 **Interview:** Ranjit Dhindsa, Head of Employment, Pensions, Immigration and Compliance, London
- 40 Risk & compliance
- 42 **Interview:** Marie-Léonie Vergnerie, Partner, Environment, France

43 Conclusion



Environmental impact and supply chain



Top Tips

Be realistic about relationship building time.

Be honest about what you need – never mould yourself to fit the corporate.

Pitch the business angle – no fluffy niceness! It's partnership & collaboration!

It's not just about money (but that certainly helps!). What is the societal impact?

How do we tap into all of this?



